



CooperSurgical®



RI Witness®



You deserve to feel confident that your eggs, sperm, and embryos are protected.

---

That's why this clinic uses the **RI Witness® ART Management System** — a smart safety tool that helps ensure your samples are always correctly identified and handled<sup>1-3</sup> during your IVF journey.

Think of it as a safety check that runs quietly in the background, supporting the embryologists while they care for your samples.

## HOW RI WITNESS® HELPS

# Your Eggs. Your Sperm. Your Embryos. Safeguarded from Start to Finish.

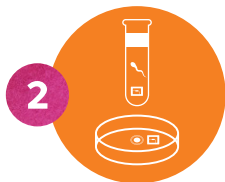
You receive your own unique ID



This ID is linked only to you.

Every part of your treatment uses this same ID so everything stays matched to you.

Your samples are given matching electronic tags



For any dish or tube holding your eggs, sperm gets a matching RFID tag so everything stays linked to you.

The system checks each step automatically



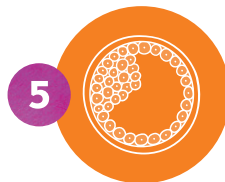
Sensors in the lab read these tags and make sure the right samples stay together.

If something doesn't match, it stops the process



If samples from two different patients are accidentally brought into the same area, the system immediately alerts the embryologist before anything continues.

Before embryo transfer, your ID is confirmed again



Your embryo dish is matched to your ID one last time before transfer, giving you even more peace of mind.<sup>1</sup>

## HOW DOES THE RI WITNESS® SYSTEM WORK?



**RI Witness** uses a safe, contact-free technology called Radio Frequency Identification (RFID) tags.

This enables the system to automatically match your unique ID to your samples,<sup>2</sup> helping keep everything correctly identified throughout your IVF journey.

## WHY PATIENTS APPRECIATE RI WITNESS®



Confidence and peace of mind during your IVF journey<sup>1</sup>



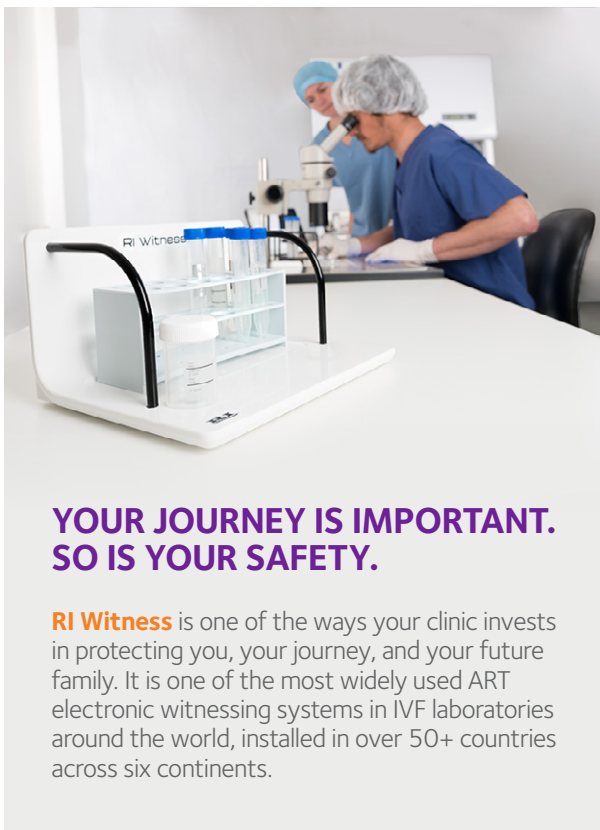
An extra layer of protection on top of the clinic's standard checks



Helps the team stay focused on caring for your embryos<sup>4</sup>



Used around the world by leading IVF clinics



## YOUR JOURNEY IS IMPORTANT. SO IS YOUR SAFETY.

**RI Witness** is one of the ways your clinic invests in protecting you, your journey, and your future family. It is one of the most widely used ART electronic witnessing systems in IVF laboratories around the world, installed in over 50+ countries across six continents.

**fertilityplus**  
Te Korito

### Fertility Plus

Level 5, Building 4, Greenlane Clinical Centre  
214 Green Lane West, Epsom, Auckland 1051

**(09) 630 9810**

**fertplus@adhb.govt.nz**

1. Forte, M. et al. (2016). *J Asst. Reprod Genet.* 33 (9), 1215–1222.
2. Sterckx, J. et al. (2023). *Hum Reprod.* 38(8), p.1529–1537.
3. Gupta, S. et al. (2020). *J Hum Reprod Sci.* 13(4), 333–339. [https://doi.org/10.4103/jhrs.JHRS\\_66\\_20](https://doi.org/10.4103/jhrs.JHRS_66_20).
4. Di Berardino, T. et al. (2022). *NAPGO. MRSi Abstracts.* Acc: <https://doi.org/10.54053/001c.37557> (acc: Oct 2024).



CooperSurgical®



RI Witness®